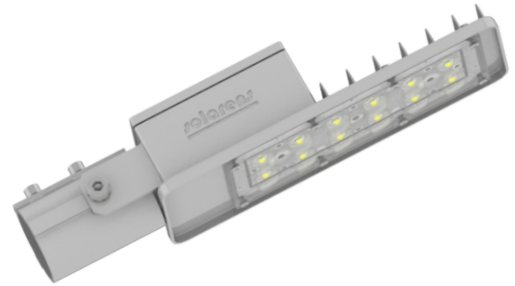


MS 10-20 Watt LED Street Light

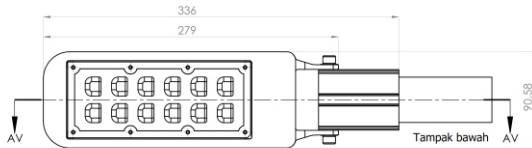
is a LED street lighting using the Lumileds Luxeon 5050 high power SMD LED with ≥ 160 lumens per watt*. The construction of body and heatsink lamp are made of sturdy aluminium die casting / extrusion. Available for 12/24VDC atau 100~240VAC with Asymmetrical IESNA Type 2 light distribution.



Applications :

Alley, Environment Areas, Residential Areas, Pedestrian, etc.

Dimensions:



Tampak Depan



Tampak Belakang

Specifications are in minimum value and subject to change without prior notice.

LUMINAIRE SPECIFICATIONS

Model	SL-0211-VS	
Rated Power	10 W	20 W
Rated flux	2000 Lm	4000 Lm
Rated System Efficacy	160 l/w	
Input Voltage	12/24/48 VDC / 100 - 240 VAC	
Frequency	50/60Hz	
Correlated Color Temperature (CCT)	5000 K \pm 250K (3000 K / 4000 K / 5700 K / 6500 K available upon request)	
Estimated Lifetime	50.000 hours (under normal environment)	
LED type	High Power LED Lumileds 5050 / Osram S8	
Beam Angle	Asymmetrical IESNA Type 2 (other beam angle Type 3 / 5 θ / 14 θ available upon request)	
Case Temperature (Tc)	<60 $^{\circ}$ C @ 35 $^{\circ}$ Ta	
Operation Temperature	-25 $^{\circ}$ C ~ 45 $^{\circ}$ C	
Working Humidity	10% ~ 90% RH	
Ingress Protection Rating	IP-66	
Power Factor (PF)	> 0.93	
THD @220VAC	< 8.5%	
Surge protection	6 kV (internal) / 10 kV (external)	
Materials	Body: Aluminium Die Casting >2mm thickness Cover: PMMA with UV protection Finishing: Powder coating	
Pipe Installation	1 1/4" adjustable 0-90 $^{\circ}$	
Dimensions (mm)	336 x 90.5 x 45 (L x H x W)	
Weight (kg)	Approx. 1	



Office & Workshop :
PT SOLARENS LEDINDO
Komplek De Primaterra B2-3B
Jalan Sapan - Gedebage, Bandung 40297 - Indonesia
Tel. +6222-87301403 | Fax. +6222-87528436 | Email : sales2@solarens.com



FS 593934 EMS 644608 OHS 644614